

# PV-ezRack SolarTerrace II-A

Pre-assembled, durable and earthed ground mount frame with ramming



# PV-ezRack SolarTerrace II-A

Pre-assembled, durable and earthed ground mount frame with ramming

PV-ezRack SolarTerrace II-A is a pre-assembled ground mount system with full earthing function suitable for commercial and utility scale installations. This quality frame is trimmed at every angle for fast deployment reducing labour costs. It was designed with a unique post profile which allows reduced embedment and therefore saves on material and labour. These features, combined with its high grade of pre-assembly make SolarTerrace II-A one of the best ground mount system you can find.

## Main Benefits

### Reduced labour costs

Through our unique, patented component design and pre-assembled supports with pre-installed positioning clamps\*\* labour time and costs are greatly reduced.

### Reduced component costs

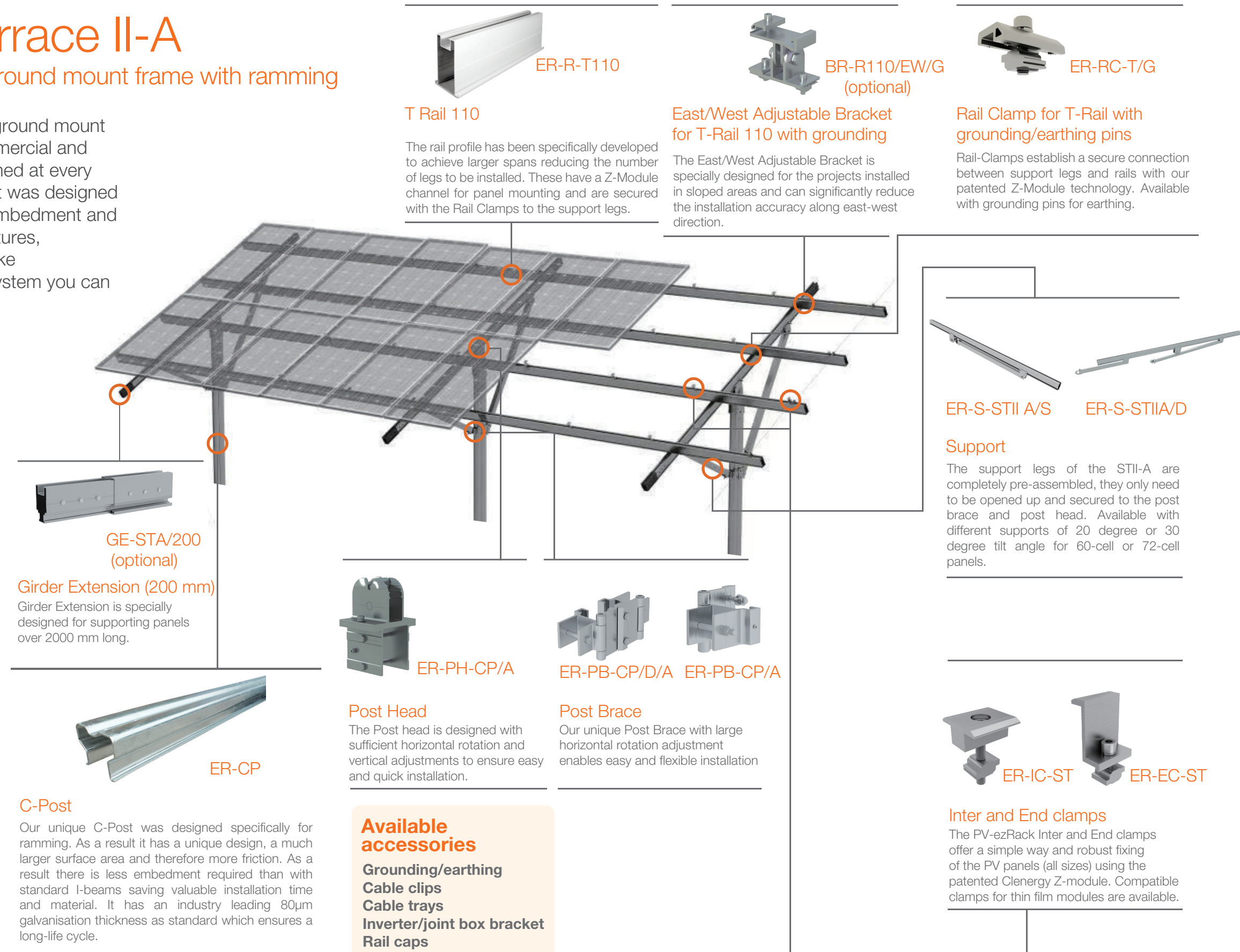
Our unique C-Post was designed specifically for ramming. This results in an increased friction against up-lift and it therefore requires less embedment as conventional standard posts or I-beams, which reduces not only labour time for ramming but also material costs.

### Wide range of adjustments

As ramming can never be done exact on millimetre the Post head is designed with sufficient horizontal rotation and vertical adjustments. This combined with a generous design tolerance levels makes it easy to get the panels perfectly aligned even if the ramming isn't 100%.

### Full earthing function

With pre-fitted pressure bolts and star washers in post head, post brace and pre-assembled support, it can create earthing continuity from T rail to post. In this way, SolarTerrace II-A system is a full earthing system.



T Rail 110

The rail profile has been specifically developed to achieve larger spans reducing the number of legs to be installed. These have a Z-Module channel for panel mounting and are secured with the Rail Clamps to the support legs.

ER-R-T110

East/West Adjustable Bracket for T-Rail 110 with grounding

The East/West Adjustable Bracket is specially designed for the projects installed in sloped areas and can significantly reduce the installation accuracy along east-west direction.

BR-R110/EW/G (optional)

Rail Clamp for T-Rail with grounding/earthing pins

Rail-Clamps establish a secure connection between support legs and rails with our patented Z-Module technology. Available with grounding pins for earthing.

ER-RC-T/G

ER-S-STII A/S

ER-S-STIIA/D

### Support

The support legs of the STII-A are completely pre-assembled, they only need to be opened up and secured to the post brace and post head. Available with different supports of 20 degree or 30 degree tilt angle for 60-cell or 72-cell panels.

GE-ST/A/200 (optional)

Girders Extension (200 mm)

Girders Extension is specially designed for supporting panels over 2000 mm long.

ER-CP

### C-Post

Our unique C-Post was designed specifically for ramming. As a result it has a unique design, a much larger surface area and therefore more friction. As a result there is less embedment required than with standard I-beams saving valuable installation time and material. It has an industry leading 80µm galvanisation thickness as standard which ensures a long-life cycle.

ER-PH-CP/A



### Post Head

The Post head is designed with sufficient horizontal rotation and vertical adjustments to ensure easy and quick installation.

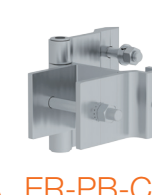
ER-PB-CP/D/A



### Post Brace

Our unique Post Brace with large horizontal rotation adjustment enables easy and flexible installation

ER-PB-CP/A



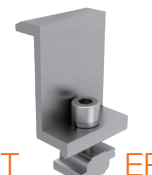
ER-IC-ST



### Inter and End clamps

The PV-ezRack Inter and End clamps offer a simple way and robust fixing of the PV panels (all sizes) using the patented Clenergy Z-module. Compatible clamps for thin film modules are available.

ER-EC-ST



## Available accessories

Grounding/earthing  
Cable clips  
Cable trays  
Inverter/joint box bracket  
Rail caps

## Materials

AL6005-T5 | SUS304 | Q235B

10 Year  
Warranty\*

Utility

Commercial



\*see Clenergy PV-ezRack warranty for further details  
\*\*available for direct shipments larger than 250kW

**Clenergy**  
Innovating renewable energy





Image: 39MW in California

**Clenergy Australia**  
 1/10 Duerdin Street, Clayton VIC 3168 Australia  
 Tel: +61 3 9239 8088 Fax: +61 3 9239 8024  
 E-mail: sales@clenergy.com.au  
[www.clenergy.com.au](http://www.clenergy.com.au)

**Clenergy China**  
 999-1009 Min'an Rd, Huoju Hi-tech Ind. Dev. Zone  
 Xiang'an District 361101, Xiamen, Fujian, China  
 Tel: +86 592 311 0088 Fax: +86 592 599 5028  
 E-mail: sales@clenergy.com.cn  
[www.clenergy.com.cn](http://www.clenergy.com.cn)

**Clenergy EMEA**  
 Esplanade 41, 20354 Hamburg, Germany  
 Tel: +49 (0) 40 3562 389 00  
 E-mail: sales.emea@clenergy.com

**Clenergy Japan**  
 Nittochi Yamashita Building 5th Floor  
 23 Yamashita-cho, Yokohama, 231-0023 Japan  
 Tel: +81 45 228 8226 Fax: +81 45 228 8316  
 E-mail: sales@clenergy.co.jp  
[www.clenergy.jp](http://www.clenergy.jp)

**Clenergy Philippines**  
 145 Yakal St., San Antonio village, Makati City,  
 Philippines  
 Tel: +63 977 8407240  
 E-mail: sales\_ph@clenergy.com  
[www.clenergy.ph](http://www.clenergy.ph)

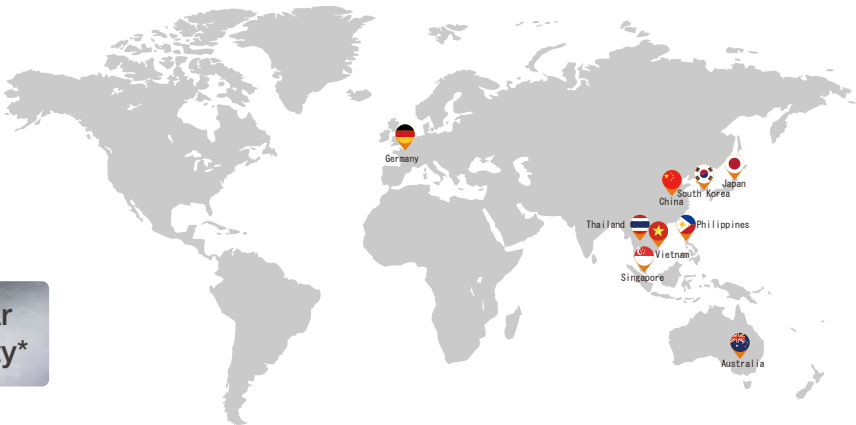
**Clenergy Thailand**  
 9/2, 5th Floor, Vorasin Building, Soi Yasooob 2, Viphavadee-Rungsit  
 Road, Chomphon Sub-district, Chatuchak District, Bangkok 10900  
 Tel: +66 (0) 2 277 5201, +66 (0) 6 3228-0200  
 E-mail: sales\_th@clenergy.com, support\_th@clenergy.com  
[www.clenergythailand.com](http://www.clenergythailand.com)

**Clenergy Singapore**  
 24 Raffles Place #28-01 Clifford Centre Singapore 048621  
 Tel: +65 9743 1425  
 E-mail: vincent.chan@clenergy.com

**Clenergy Malaysia**  
 Tel: +86 18750231005  
 E-mail: sales\_em@clenergy.com

**Clenergy Vietnam**  
 Tel: +86 592 3110095  
 E-mail: sales\_vietnam@clenergy.com; susie.chen@clenergy.com

## Worldwide Network



Clenergy PV-ezRack SolarTerrace II-A Brochure 202009

In support of our policy of continuous product improvement we reserve the right to change materials and specifications without notice. Drawings, where used, are not to scale. All dimensions are in millimetres and sizes given are approximate. Where possible, technical MSDS data sheets are made available on the website. All products should be installed and used in accordance with manufacturer's instructions provided. Warning: products may be the subject of registered designs and patents. Refer to website for terms and conditions on warranty.

T: 1800 844 891 | E: orders@mhpower.com.au | W: mhpower.com.au

